



CLASSIC RECREATION SYSTEMS, INC.

www.classicrecreation.com

TABLE OF CONTENTS

ASIAN

4



COLORADO

16



KIOSKS

30



ASPEN

5



COUNTRY GARDEN

18



MARANA

32



OCOTILLO

39



SAVANNAH

48



SPORTS PAGE

54



DETAILS

60



ATLANTA

6



DALLAS

20



MESA

34



OREGON

40



SCOTTSDALE

50



TOWNE LAKE

56



SOLUTIONS

62



BILTMORE

8



DENVER

22



TRELLIS

57



SOLAR POWER

64



BUS STOPS

9



DUGOUTS

24



VERDE

58



COLORS

66



CAMPION

10



FABRIC

26



VIENNA

59



CHARLESTON

12



HEARTLAND

27



MINGUS

36



ORLANDO

42



SEDONA

52



CHEYENNE

14



ISLAND

28



NORTHWEST

38



PRESCOTT

46



SIERRA

53



Welcome! We hope you enjoy our newest catalog which is a representation of the quality structures we provide.
~ Newell Roundy



ASIAN SERIES

Our Asian Series structures are available in a wide variety of sizes and shapes such as square, rectangle, hexagon and octagon. Custom overhead and roof ornamentation is designed to reflect centuries old details on Asian gazebos. Send us your concept sketch and we'll create a special design to suit your needs.

- Available in many sizes and shapes
- Choose from several roof styles
- Custom designed ornamentation
- Custom columns available

PAGODA MODEL

◀ *Rosehills Memorial Park & Mortuary, Whittier, CA.: 12' hexagon with 10" square column bases & 6" diameter columns, 3/8" solid steel laser cut overhead ornamentation with custom roof ends steel ornamentation, and 6" ball finial with tapered spire.*

SHANGHAI MODEL



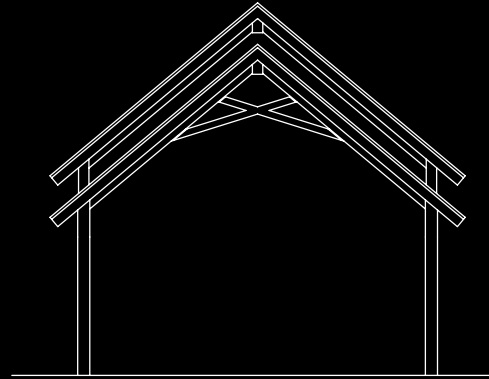
Greenwood Cemetery, Phoenix, Az: 7' x 37' 2 tier rectangle entry structure featuring 2" x 6" T & G sub-roof w/ Scan Roof metal tile reminiscent of Asian tile roofs.



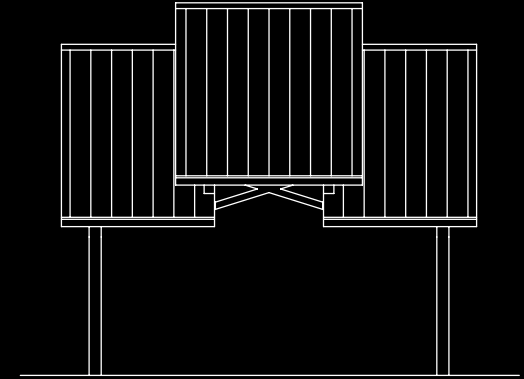
ASPEN

The Aspen model design was influenced by high elevation ski lodges. The steep roof pitches with cross buck support beams also play off the early 1900 railroad bridges and lend a sturdy structural element for those heavy snow loads.

- Many sizes available to fit your site
- Available with or w/o 2" x 6" T & G sub-roof
- A wide variety of roofs to chose from
- Excellent for high snow loads



Gable End Elevation View



Side Elevation View



A

Ceiling Detail: Select 2" x 6" T & G sub-roof w/ lights & hidden wire runs.



B

Markwood Park, Irving, TX: 20' x 20' Aspen model with 12" o.c. Weathered Copper color standing seam steel roof with a 2" x 6" T & G sub-roof. Stone and brick by others.



ATLANTA

Classic Recreation Systems' Atlanta model features twelve posts surrounding a space suitable for very large gatherings. As with all models, the Atlanta features no exposed conduit, and a clean, modern design with no exposed bolts. The frame can be assembled by a small work crew in less than one day.

- Spacious dodecahedral (12-sided) design
- Optional cupola available
- 6:12 roof pitch
- The Atlanta structures shown on these pages are measured through the center of the structure out to out of the columns. The new way of measuring Atlanta models is through the center of the structure "point to point" of roof.



A

Chevron North, Covington, LA: 2" x 6" T&G sub-roof with lights & fans by others.

- ◀ *Wade Walker Community Park, Atlanta, GA: 60' Atlanta model with optional masonry surrounds, supplied by others. Hawaiian Blue R-panel roof with Creme powder coat frame and standard cupola.*



B

Detail of 60' model center compression ring, showing twelve beam connection.



C

Chevron North, Covington, LA: Chevron Oil Companies Headquarters. 50' Atlanta model, w/ standing seam roof in Colonial Red.

BILTMORE



A

Doerr Park, San Jose, CA: 20' x 20' model with Jade Green roof. Externally-placed columns maximize interior space.



B

Cactus Park, Scottsdale, AZ: A Hemlock Green HR-36 steel roof covers this 20' x 20' model.

The recessed roof of the Biltmore Model creates a contemporary, uncluttered design that complements many architectural styles. Columns are placed on the outside corners of the structure to maximize interior space.

- Contemporary design
- Square or rectangle
- Recessed roof between heavy duty frame
- Measured from outside to outside of frame (varies slightly along eave)



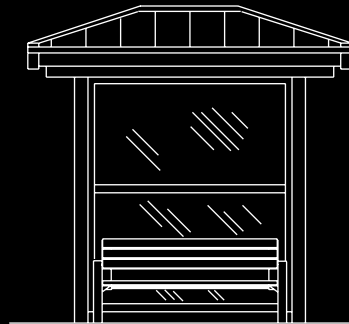
C

29 Palms Marine Base, CA: Rugged enough for the Marines and easily capable of withstanding desert temperatures that exceed 100°, this 16' x 32' model serves as a rest stop on a jogging path.

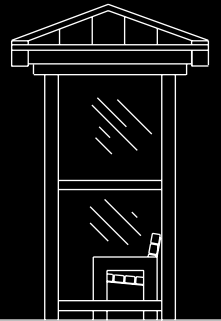
BUS STOPS

Classic Recreation Systems' shade structures can be scaled to create attractive and durable bus stops, providing welcome shade and unparalleled vandal resistance. Standard bus stops come with an HR-36 steel roof. The following models convert easily to bus stops:

- Champion
- Colorado
- Mingus
- Mesa
- Orlando
- Prescott



Front Elevation View



Side Elevation View



Quarry Bay, Tai Koo, Hong Kong: Twelve 6' x 8' 2-post Prescott model bus stops surround a common recreation area for several high-rise housing units.



B

Park & Ride, Pleasanton, CA: 10' x 20' cluster column Custom Orlando model w/ Cool Weathered Copper 12" o.c. standing seam roof.



C

Plantation, FL: 10' x 10' 2-post Orlando model. Jade Green 12" o.c. standing seam roof.



D

La Mirada, CA: 5' x 16'-6" 4-post Mingus model. Perfect for tight spaces, with Terra Cotta 12" o.c. standing seam roof.



CAMPION

The Champion design theme was conceived by landscape architects with the City of Irving, Texas and developed by CRS for a twenty-mile river walk. This model is available in many shapes and sizes, and can be constructed with or without stone work. Masonry work provided by others on site.

- 10:12 Roof pitch
- Custom ornamentation
- Measured eave to eave
- Other roofs available
- Many sizes and layouts available
- Square, Rectangle, "T" and Cross-shaped

◀ Vista Ridge, Erie, CO: 24' x 24' cross shaped Champion model with cross shaped columns, 12" o.c. standing seam roof in Leaf Green color.



A

Las Brisas planned community, Goodyear, AZ. This cross-shaped 40' x 49' structure features faux stone (provided by others) and a "Jade Green" standing seam steel roof.



B

Modesto, CA: A new city park features several 10' x 14' 2-post models with Cool Weathered Copper 12" o.c. standing seam roofs.



C

Naomi Press Park, McKinney, TX: "T"-shaped 18' x 36' model with native stone, entry cupola & "Leaf Green" standing seam steel roof.



D

Residential Park, Erie, CO: This 32' x 32' structure features standard 10" x 10" columns with "Rustique" colored HR-36 steel roof.



CHARLESTON

The Charleston is a versatile hexagon design, available in many sizes. These photos show the wide variety of features that may be added.

- Versatile hexagon shape
- Available with cupola or 2nd tier
- Tubular steel columns and frame
- Available in sizes up to 60' clear span
- The Charleston structures shown on these pages are measured through the center of the structure out to out of the columns. The new way of measuring Charleston models is through the center of the structure “point to point” of roof.

◀ *Olympic Park, Aurora, CO: This two tier 20' Charleston model features a 6:12 pitch in Parchment 12" o.c. standing seam steel roof w/ tubular steel fascia.*



B

Sierra Verde, Glendale, AZ: With a second tier to facilitate airflow, this 36' model features a 4:12 pitch in Terra Cotta colored HR-36 steel roof.



A

Eagle River, AK: This 32' model offers panoramic views of the Chugach Mountains at Town Square Park. Shown with HR-36 roof in Regal Blue.



C

Sweetwater Wetlands, Tucson, AZ: Situated on a promontory at a wildlife viewing area, this 30' model features a 6:12 pitch, Hemlock Green HR-36 roof.



D

Neighborhood Park, Las Vegas, NV: This 26' model creates a Southwestern style using a tile roof over a 2" x 6" tongue & groove sub-roof.



E

Chattanooga, TN: A cluster of 16' hexagon shelters provide shade and a gathering place for a downtown neighborhood. Another cluster at the far end of the park is connected in a semicircle for small or large gatherings. Shown with Terra Cotta HR-36 roofs.



CHEYENNE

Inspired by turn-of-the-century barns, the Cheyenne model is available in a variety of square or rectangular sizes. The standard model is supplied with tubular steel columns, though masonry may be added as shown below. Easily enclosed with clerestory windows. Masonry work provided by others on site.

- Unique turn-of-the-century styling
- Masonry columns may be added
- 2nd tier provides excellent ventilation
- Measured thru center, point to point of roof

◀ Brentwood Park, Murphy, TX: This 16' x 16' Cheyenne model features a Hemlock Green standing seam roof, Crème powder coated frame and steel tube fascia. Stone surrounds by others.



A
Homestead Community Park, Phoenix, AZ. 20' x 20' structure with 4 cluster columns and "Parchment" color HR-36 steel roof.



B
Thurman Flats Camp Ground, Southern CA: 28' x 42' Cheyenne model w/ a blasted steel, rust finish frame. Stone surrounds by others.



C
Walton Park, Verrado, AZ: 26' x 34' Cheyenne model with 12" o.c. standing seam steel roof in "Weathered Copper" color. Features double tube steel columns with rafter extensions.



D
Ogden Nature Center, Ogden, UT: Standard 30' x 60' model featuring a nostalgic barn appearance with Forest Green HR-36 steel roof.



COLORADO

This distinctive curved-roof model is available in many different sizes and roof radii. CRS curves the square or rectangular rafter beams to match the roof radius, yielding an uncluttered appearance with minimal distortion. The Colorado may stand alone or serve as a building entrance.

- Roof curved in direction of ribs
- Tubular steel beams
- Use as building entrance or as stand alone
- Available in different sizes and roof radii
- Available with ornamentation
- HR-36 recommended for curved roof
- Measured eave to eave



A

West Area Park, Glendale, AZ: 25' x 34'-5" & 30' x 42' custom 2 post Colorado models with curved HR-36 steel roof in Regal Blue color.

◀ Trail Winds Park, Thornton, CO: 30' x 40' Colorado model with curved corrugated steel roof in Colonial Red color. Masonry surrounds by others.



B

East Valley Academy, Chandler, AZ: This 36' x 51' high school lunch pavilion has a curved roof of 24 gauge HR-36 galvalume steel with no trim, with attached 15' 6" x 51' Sierra model. The shelter design complements the art deco campus architecture.



C

Cochiti, New Mexico: 12' x 12' Colorado model with curved HR-36 in Copper Penny color w/o trim.



COUNTRY GARDEN

This model establishes a country garden theme for your project, offering exceptional vandal resistance with a heavy-duty frame.

- Available in square or rectangle
- Rectangular columns and frames
- Measured outside to outside of frame
- Heavy duty
- Recessed steel roof
- Many sizes available

◀ Winner's Circle, Flowood, MS: 16' x 16' Country Garden models throughout the park are finished in gloss black with Forest Green HR-36 roofs.



D

Marymoor Park, Redmonds, WA: 16' x 16' Country Garden model w/ 12" o.c. standing seam steel roof in Forest Green Color.



A

Reno, NV: 24' x 30' model with Parchment standing seam roof. Outside placement of columns maximizes interior space.



B

O'Neill Park, Glendale, AZ: This 30' x 40' model easily accommodates large groups.



C

Lawn Bowling Club, Arcadia, CA: This pair of 16' x 16' models complements a stylish club setting in Southern California. Shown with Marine Green HR-36 steel roofs.



CITY LAND PAVILION

DALLAS

The Dallas Model recalls an earlier era, with clean, modern lines. It is available with variable-height roof tiers, and with a standard vented New England-style cupola. The number of tiers varies with size; the 16' and 20' models feature two tiers standard.

- Two and three tiers available
- Functional cupola
- 8:12 roof pitch
- Optional ornamentation and railing
- Many sizes available
- The Dallas structures shown on these pages are measured through the center of the structure out to out of the columns. The new way of measuring Dallas models is through the center of the structure “point to point” of roof.

◀ *Tumbleweed Park, Chandler, AZ: 20' Dallas model, 2 tier w/ cupola, H.D. ornamentation & railing, 12" o.c. standing seam steel roof in Regal Blue color.*



A

Knoxville, TN: With H.D. railing and ornamentation, this custom 20' two-tier w/ cupola is a beautiful park centerpiece. The weathervane supplied by others.



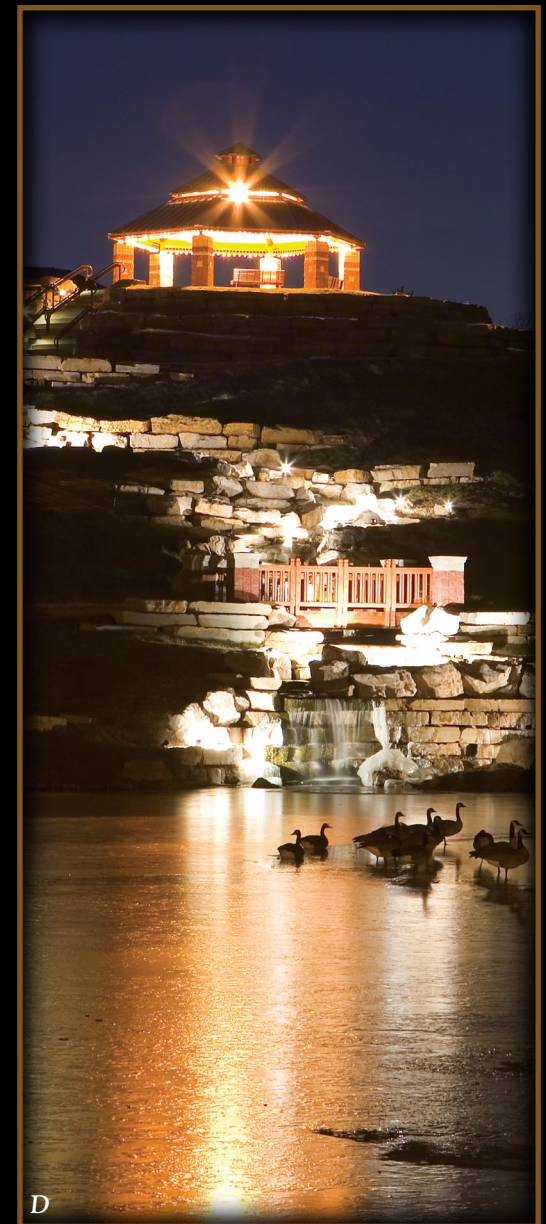
B

Beavers Run Park, Fairview, TX: 24' Dallas model, 2 tier with cupola, H.D. ornamentation, HR-36 steel roof in Forest Green color, native stone surrounds by others.



C

Community Park, Las Vegas, NV: This three-tier 28' model is the park focal point and features a tile roof and diamond pattern ornamentation.



D

Koeneman Park, St. Louis, MO: A 28' two-tier model overlooks this beautiful park complimenting the waterfall and lagoon, which provides a waypoint for migrating geese, who obliged the photographer by standing still for the 90-second exposure.



DENVER

Available in square and rectangle, this popular model can be designed to complement a variety of architectural styles. Designers may specify columns and roof to match existing architectural amenities simply by varying the column materials and design.

- Available in square, rectangle, “U” or “L” shapes
- Measured eave to eave

◀ Madeira/Vareda planned communities, Henderson, NV: 20' x 20' Denver model with 4' eave, 17" o.c. Weathered Copper standing seam roof on 2" x 6" T&G subroof with 4:12 pitch.



A

Utah Park, Aurora, CO: Located at a popular midtown tennis center, this 20' x 20' features a Marine Green HR-36 steel roof with 6:12 pitch. The information kiosk was custom-fabricated by CRS.



B

Community Park, Anthem, AZ: 18' x 18' with Burgundy standing seam roof w/ 2" x 6" tongue and groove sub-roof. The massive block columns feature hand painted tile insets depicting a variety of recreation themes within the park.



C

Fort Hunter Liggett, CA: This 16' x 16' model features a Spanish tile roof w/ 4:12 pitch, applied over a 2" x 6" tongue and groove sub-roof. A 2" x 6" wood fascia finishes off the Spanish design theme.



D

Turkey Lake Park, Orlando, FL: This 40' x 60' model features a 4:12 pitch on poured concrete columns, with Tahoe Blue HR-36 steel roof.



DUGOUTS

Our dugouts are available in many sizes and column configurations. The standard model features a 24-gauge HR-36 steel roof, without tubular steel fascia. Custom models may add tubular steel fascia, heavier 22-gauge steel roof for additional vandal and dent resistance, or for even more protection, a 2" x 6" tongue and groove subroof. Fencing and walls are provided by others.

- Good visibility, with varying column layouts
- Rugged, with heavy-duty roof options
- See Marana model for cantilever dugout design
- Measured from eave to eave

◀ Sports Park, Palm Coast, FL: This standard 8' x 30' 6-post model features a 24-gauge HR-36 steel roof and Brilliant Blue powder-coated frame.



A

Russell Field, Cambridge, MA: 7' x 17'-4 1/2" 3 center post dugout w/ 24 ga. R-panel steel roof in Hemlock Green color.



B

Archgate Softball Complex, Plano, TX: 8'-5" x 33'-8" curved roof dugout with corrugated steel roof in Sierra Tan color & galvanized frame.



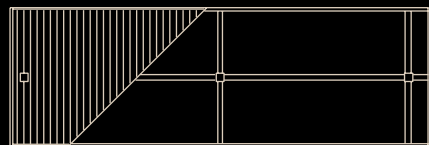
C

Castle Rock Park, Castle Rock, CO: 7' x 22' 4 post dugout w/ 24 ga. HR-36 roof in Regal Blue.

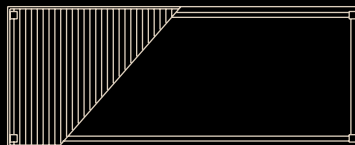


D

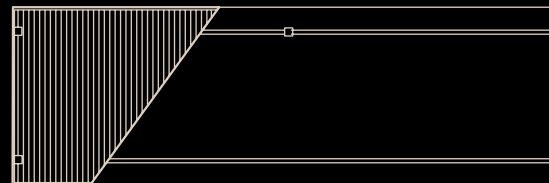
Joseph C. Carter Park, Ft. Lauderdale, FL: 9'-7" x 29' Custom Dugout w/ round columns & standing seam roof.



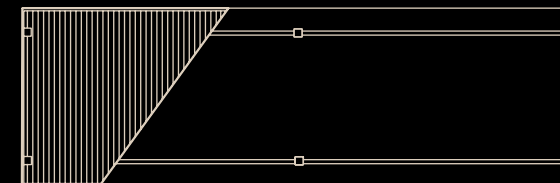
Center post layout



Four post layout



Five post layout



Six post layout

FABRIC



A

Mehl Family Foothills Park, Tucson, AZ: 48' hexagon with Commercial 95-Synthetic "Coolaroo" fabric in Sky Blue color with Cream color powder coated frame.



B

Mehl Family Foothills Park, Tucson, AZ: 48' hexagon showing "Coolaroo" fabric to post connection detail.



C

Queen Creek, AZ: 20' X 30' Hip Model in Coolaroo fabric in Desert Sand color.

In the tradition of our steel structures, we have paid attention to detail of how the fabric is attached to our columns and have hidden the tensioning device to the greatest extent possible while keeping the system easy to install, tension the fabric and maintain. This creates an uncluttered fabric structure that is structurally sound. Synthetic 95 "Coolaroo" fabric is our standard and we offer optional fabrics such as the Extra Heavy Duty Comtex, Polyfab fabric which is fire rated with a 10-year warranty.

- Many colors, sizes and shapes available
- East to install and disassemble
- Works in many situations, schools, parks, hospitals, hotels, resorts
- Custom designs available



D

Childrens Park at Town Square, Las Vegas, NV: 4 panel "Coolaroo" Sail Cloth.

HEARTLAND

Inspired by traditional barns in the farmlands of the United States and Canada the Heartland Model depicts a time honored barn style we all relate to with the gambrel double pitch roof. Those of you lucky enough to be raised on a farm will have your senses stimulated to remember all the activity and sounds associated with the large barns of Americana. By specifying this model a person will evoke those good memories of the smell of hay, and the lowing of the cows as they are ready to be milked.

- Available in many sizes
- Other roofs available including shakes or shingles on T&G subroof
- Add stone column bases to depict the stone foundations of old barns
- Add laser cut animal ornamentation below the eaves
- Add old style barn lights
- The possibilities are endless to have fun with this structure



A

Tumbleweed Park, Chandler, AZ: 16' x 21' Heartland models with 24 ga HR-36 steel roofs in Bright Red & Evergreen colors with cupola's and provision for weathervanes. (20' Dallas model in background to right)



ISLAND SERIES

Classic Recreation System's series of single-post park structures evoke a relaxed, South Pacific feel, without relaxing on the exacting needs of your project. Structures can be built to withstand 120 mph wind loads, and the legendary heavy-duty construction guarantees years of maintenance-free use.

- Variety of designs: four, six and eight-sided roofs available
- An excellent complement to pools and water features
- Heavy duty tubular steel fascia
- Measured outside to outside of fascia (flat sides)

◀ Meadow Woods Park, Orlando, FL: 20' Hawaii model works well for moderate-sized groups. Variety of sizes available. Brilliant Blue powder coat shown.

FIJI MODEL



This 10' octagonal Fiji model features a 6" round exterior column, offering unobstructed seating space. Shown with custom powder coat frame and Cool Aegean Copper corrugated steel roof. Digital composite setting.

HAWAII MODEL



Meadow Woods Park, Orlando, FL: The clean design of this Hawaii model leaves maximum space for gatherings and features Galvalume 12" o.c. standing seam steel roof and standard tube steel fascia.



Meadow Woods Park, Orlando, FL: Detail of Hawaii model w/ 10" diameter post, hidden beam connections and smooth white standing seam underroof.



Informational sign with multiple notices and a blue background.

Miami-Dade Public Library System

BOOK

KIOSKS

Many of our shade structures can be scaled down and converted into kiosks. The standard kiosk is supplied with an HR-36 steel roof and a 3/4" unfinished, marine grade plywood information board. Hinged and locking vandal resistant aluminum cabinets are available, along with a variety of roofs and powder coatings for the frame. Several of the displays or cabinets shown are provided by the owners. Kiosks are measured eave to eave or point to point, with the exception of the Charleston kiosk, which is measured outside to outside of columns.

◀ Ludovici Park, Palmetto, FL: Standard 6' x 8' Orlando Kiosk with a 3' x 4' plywood info board with customer applied Plexiglas door, HR-36 steel roof in "Weathered Copper" color. Optional locking aluminum cabinets with acrylic doors are available. (See right side of this page.)



A

DeKalb, IL: 6' x 6' Mesa kiosk with standard 3' x 4' aluminum cabinets. Bright Red HR-36 steel roof with black powder coat frame.



B

Sweetwater Wetlands, Tucson, AZ: 8' wide Charleston model hexagonal kiosk with three graphic panels, supplied by others. Hemlock Green HR-36 steel roof.



C

Observation Area at Van Nuys Airport, Van Nuys, CA: 7' Triangle Kiosk w/ 3' x 3' satin aluminum cabinets. 4:12 pitch HR-36 steel roof and frame are finished in Jade Green. Free flying lessons offered at right. Standard roof pitch is 6:12.



OPTIONAL

**Aluminum
Cabinets**

(w/ acrylic doors)

BENEFITS

- Available in a variety of sizes
- Interior cabinet lights available
- Single or double doors



MARANA

The Marana's space-optimizing design is excellent for viewing areas, parking structures, walkways or bus stops. It is available in many lengths and widths to meet your specific requirements.

- Excellent for sporting events
- Heavy duty carport canopy
- Tubular steel frame
- No open purlins
- Measured eave to eave

◀ Pioneer Park Roller Hockey Rink, Prescott, AZ: 12' x 77'-8" Marana model with HR-36 steel roof in Colonial Red. Roof sloped away from restroom/concession.



Steele Indian School Park, Phoenix, AZ: A 12' x 18' Marana makes an efficient open space for an afternoon at the park. The uncluttered design installs anywhere with ease.



Chisenhall Sports Complex, Burleson, TX: 16' x 26'-42' Marana models w/ corrugated roof & rust colored powder coated frames.



Vancouver, WA: Featuring a forward sweep "V" configuration, this 12' x 43' gloss black model encloses picnic tables under a 2" x 6" tongue and groove subroof.



MESA

Our most popular model features a practical and attractive hip roof design that sheds water efficiently and provides excellent shade. Available in a wide variety of shapes and sizes: square, rectangle, “U” and “L” shapes. Shade a single picnic table, cover a playground or an entire basketball court.

- Popular hip roof design
- Heavy duty square steel construction
- Available in square, rectangle, “L” or “U” shapes
- Many sizes available
- Measured eave to eave

◀ *Lost Dutchman State Park, Apache Junction, AZ: A structure as rugged as its surroundings, this 20' x 20' Mesa model awaits anyone needing a little shade and awesome scenery. Shown with Parchment-colored HR-36 steel roof.*



A Estates at Park Avenue, Orlando, FL: 12' x 12' Mesa Model w/ HR-36 steel roof, 6:12 pitch, Weathered Copper color.



B Community Sports Park, Cummings, GA: This economical design stands up to heavy use and keeps looking great. 24' x 40' model shown with Forest Green HR-36 steel roof.



C Meadow Woods Park, Orlando, FL: 12' x 12' 2-post Mesa model, tubular steel fascia and 12" o.c. standing seam steel roof. Brilliant Blue powder coat frame.



D Burgess-Stipek Park, Snohomish, WA: Custom 12' x 12' two-post Mesa with Regal Blue standing seam roof (6:12 pitch), tubular steel fascia and decorative round columns.



E Copper Hills High School, Fresno, CA: A 35' square model provides shade and stands up well to the abuse of teenagers! This specific structure is California DSA approved.



MINGUS

The Mingus Model is designed with versatility in mind—from center court to mountaintop shelter to downtown bus stop. Columns can support a wide variety of proprietary equipment and accessories, such as signage, telephones or flip chairs, and the hip roof enhances an already sturdy design. The model can also be constructed to fit narrow spaces as needed. Chair and other equipment supplied by others.

- Double 5" x 5" column standard, double fascia design
- Flip chairs, signs, telephones, etc. can be mounted on columns
- Available in many sizes
- Measured from eave to eave

◀ *Sycamore Highlands Park, Riverside, CA: This 12' x 24' model serves as a resting spot for outdoor basketball players. Shown with Cool Weathered Copper 12" o.c. standing seam roof and tubular steel fascia, which is standard on all Mingus models.*



A

Community Park, Anthem, AZ: This 9' x 18' model illustrates the standing seam roof in Jade Green w/ optional 16" x 24" square masonry columns.



B

Community Park, Elmo, UT: Several 9' x 18' Mingus models provide shelter for small groups. All models are shown with Hemlock Green HR-36 steel roofs and requested 4" x 4" columns.



C

Potato Patch Rest Area, Mingus Mountain, AZ: Our standard 9' x 18' model illustrates the 12" on-center standing seam steel roof in Cool Weathered Copper.

NORTHWEST



A

Forest Preserve, Batavia, IL: 20' x 30' Northwest model with 2" x 6" T & G sub-roof and fascia with shingles. Stone surrounds by others.

The Northwest Model's striking clerestory design creates a modern look with classic lines. The variable roof pitches and large opening provide unparalleled ventilation, yet still protect occupants from the elements with its heavy-duty engineering and geometry.

- Innovative clerestory roof design
- Heavy duty tube steel construction
- Available in square or rectangle
- Many sizes available
- Variable roof pitches available
- Measured eave to eave



B

Forest Preserve, Batavia, IL: 36' x 50' Northwest model with 2" x 6" T & G sub-roof and fascia with shingles. Stone surrounds by others.



C

Meadows Park, Castle Rock, CO: 30' x 40' Northwest model with HR-36 steel roof in "Colonial Red" color. Masonry surrounds by others.

OCOTILLO

Classic Recreation's one-of-a-kind southwestern-style Ocotillo model features a corrugated, curved steel roof and 1 $\frac{3}{4}$ " rebar support "canes." It is available up to 20' wide, in square or rectangle. It is offered with corrugated or HR-36 steel roofs.

- Available with tube steel columns
- Large rebar "cane" columns
- Available up to 20' wide
- Measured eave to eave



A
LBJ Park, Grand Prairie, TX: 15' x 15' Ocotillo model with corrugated steel roof in Copper Penny color..



B
Fort Huachuca, Sierra Vista, AZ: A 10' x 10' unit is ideal for a single-table picnic area.



C
Las Vegas Wash Trails, North Las Vegas, NV: 20' x 20' Ocotillo model w/ curved HR-36 steel roof in Terra Cotta color.



OREGON

This popular octagon model complements curvilinear as well as angular hardscape designs, and customizes easily. Available with 2nd tier roof or lattice.

- Versatile octagon design
- Optional cupola available
- Complements curvilinear designs
- The Oregon structures shown on these pages are measured through the center of the structure out to out of the columns. The new way of measuring Oregon models is through the center of the structure “point to point” of roof.

◀ Kaibab National Forest, Jacob Lake, AZ: These 45' structures are ideal for large tour groups visiting the North Rim of the Grand Canyon. Shown with Burnished Slate R-panel steel roof, with wood fascia and 2" x 6" tongue and groove subroof.



Rose Garden at Reid Park, Tucson, AZ: This 36' Oregon model is the focal point of an octagonal-shaped rose garden, w/ four concrete paths intersecting at the structure. Parchment HR-36 steel roof and natural rust frame.



Lighthouse Park, Jacksonville, FL: Shown with custom 6" round columns, this 20' octagon features a 6:12 pitch in Forest Green color HR-36 steel roof.



Olympic Park, Aurora, CO: This rugged 24' model features a Regal Blue 12" o.c. standing seam steel roof with tube steel fascia. Two-tier Charleston shown beyond.



Weston Ranch HS, CA: A 2" x 2" lattice tube 2nd tier allows light and air movement on this 41' model. Metallic Copper HR-36 roof matches buildings. CA DSA approved.



ORLANDO

The simplified design of the Orlando results in a clean, economical model, using the same exceptional craftsmanship and high quality materials that are standard on all of our designs.

- Cost-effective design
- Small and large sizes available
- Gable end may be enclosed
- Easily customized
- Measured eave to eave

◀ Anthems-Aspen, Broomfield, CO: Custom 20' x 20' Orlando model with chord beam and kingpost, HR-36 roof in Cool Dark Bronze color w/ 4:12 pitch. Stone surrounds by others.



A

Prospector Park at Verrado, Goodyear, AZ: This extensively customized 22' x 26' 10" model features trellis and vinyl lattice ornamentation, along w/ 2 & 3-post construction. Site-painted white frame & Cedarlite shake roof (by others) on T & G subroof.

STANDARD MODELS



B

Atlanta, GA: This 20' x 30' six-post model shelters large gatherings at this community park. Regal Blue HR-36 roof.



C

Community Park, Moulton, AL: This 24' x 50' six-post model features a Terra Cotta HR-36 steel roof.



D

Castle Rock, CO: This standard 12' x 20' is ideal for budget-minded clients who value low maintenance and vandal resistance. Dark Bronze HR-36 roof.

ORLANDO MODELS, CONTINUED



A

Tennis Center, Chandler, AZ: 6' x 8' models shown with optional standing seam roof and Colonial Red roof color.



B

Harris Branch Park, Austin, TX: This 24' x 45' model easily accommodates large groups.



C

Bartley Ranch, Reno, NV: Designed in a forward-swept wing configuration, this 24' x 76' model creates shade for a large group, then adds a wing that can be used by speakers or a cook, or simply more people. Shown with Jade Green corrugated steel roof and square New England-style cupola.



D

Pinon Rest Area, Pueblo, CO: Several inexpensive 12' x 12' Orlando 2-post models provide shade for small groups at a rest stop along I-25. Custom blue R-panel roofs match rest area buildings.



E

Verrado, Goodyear, AZ: Custom 2-post 14' x 25' models are focal points for this community park space. Models feature custom stone column surrounds, roof tile (by others) and T & G subroof.



A

Rose Meadows Park, Irving, TX: While uncomplicated in design, the Orlando model has been one of our most popular to customize, as shown on these handsome 20' x 28' models. CRS created curved ornamentation from the designer's working drawings. The brick and stone work is by others. Shown with Bright Red R-panel roof and T & G subroof.



B

Harbor Park, Middletown, CT: This 14' x 32' Orlando is a focal point for a historical wharf district. It has a raised cupola with an attached 8' x 8' x 26' high tower. Shown with Forest Green standing seam steel roof and curved square tubing ornamentation.



C

Rancho El Dorado, Maricopa, AZ: Custom 13'-8" x 46' & 20' x 32' Orlando models are centerpieces located at the entrance of a new upscale housing community. Custom masonry & faux stone surrounds underlie an I-beam frame and a Marine Green standing seam steel roof with tubular steel fascia.



D

Wheel Park, Aurora, CO: This award-winning cross-shaped custom model features artist-designed suspended ornamentation and site-painted roof.



PRESCOTT

Designed to complement round tube playground equipment, this unique model has an exposed round frame. The three-tube column gracefully curves into the hip and fascia beams, which create the structure frame. Available up to 30' square or 40' hexagonal.

- Round steel tube columns and frame
- Design complements play structures
- Available with unique cupola
- Available in square or hexagon
- Measured outside to outside of columns (through center for hexagon)

◀ *Community Park, Reno, NV: This 24' Prescott hexagon creates plenty of shade while matching the park's design theme. Regal Blue HR-36 steel roof.*



A

Sierra Verde, Glendale, AZ: The 16' x 16' is one of our most popular sizes. The columns are located at the outermost corners of the structure, allowing more space inside for tables and people.



B

North Lake Park, North Lake, FL. 18' Prescott hexagons with HR-36 steel roof and bright powder coated frames.



C

Summit Ridge Park, Reno, NV: A 2-post 9' x 18' Prescott model protects patrons along a walking path. Cool Weathered Copper standing seam roof.



D

City Park, Garden Grove, CA: The 24' hexagon is a nice complement to any park, creating a style all its own. Shown with Terra Cotta HR-36 roof.



SAVANNAH

This stylish octagon model is available in a variety of sizes with two or three roof tiers and/or a New England-style cupola. Ornamentation and railings are also available. This structure is particularly pleasing as a central focal point in a park and makes a great band pavilion.

- Two and three tier designs available, with cupola
- Excellent air circulation
- Octagon with 6:12 roof pitch
- The Savannah structures shown on these pages are measured through the center of the structure out to out of the columns. The new way of measuring Savannah models is through the center of the structure "point to point" of roof.

◀ West Feliciana Sports Complex, St. Francisville, LA: Custom 36' Savannah model with poured in place concrete columns support Colonial Red standing seam roofs to match concession and bathrooms. Optional ornamentation graces the raised 2nd tier.



Paradise Park, Reno, NV: This 28' model two-tier structure features a New England style cupola, with HR-36 roof, colored Jade Green.



Cheyenne Mountain, Colorado Springs, CO: 58'-6" Savannah model 12" o.c. standing seam steel roof, 4:12 pitch, in Hemlock Green color. 2" x 6" cedar T&G sub-roof & cedar fascia.



T & G subroof and no exposed conduit to interior lighting.

Cannon Park, Salisbury, NC: This 30' custom model has a 2" x 6" T & G subroof with fiberglass shingles, a raised 2nd tier, custom curved ornamentation and brick columns, giving a feeling of Southern hospitality. No field welding required!



Pearl High School, Pearl, MS: This 54' model features three tiers and cupola, with custom school mascot weathervane. Regal Blue HR-36 steel roof.



Val Vista Lakes, Gilbert, AZ: Lights at night.

SCOTTSDALE

This popular model is especially efficient with a functional 2nd tier, facilitating a pleasant airflow on those warm summer days. The Scottsdale is easily dressed up with masonry stonework.

- Popular architectural style
- 2nd tier standard
- Increased air circulation
- Available in square or rectangle
- Many sizes available
- Measured eave to eave

◀ Val Vista Lakes, Gilbert, AZ: 20' x 20' Scottsdale model with 3 cluster columns, HR-36 steel roof in Marine Green color. Set on a fishing pier.



A

Barker Lake, Houston, TX: 25' x 25' Scottsdale, with cool Copper Penny 12" o.c. standing seam roof with Traffic White powder coated frame, custom lattice ornamentation and cluster columns.



B

Ridgeway Community Park, Lone Tree, CO: 30' x 30' Scottsdale model with 12" o.c. standing seam steel roof in Copper Penny color.



C

Sierra Verde, Glendale, AZ: A 16' x 16' model next to a sand volleyball court. Shown with standard HR-36 steel Terra Cotta roof.



D

Hurwitz Park, Irving, TX: A beautiful 24' x 24' model w/ Tahoe Blue HR-36 steel roof, over 2" x 6" tongue & groove subroof. Masonry and stone work by Owner.

SEDONA



A

Rosehill Meadows Park, Kirkland, WA: 20' x 30' Sedona model in powder coat RAL Beige 1001 w/ standing seam roof.



B

Based on the same architectural footprint as the Biltmore and Country Garden models, the Sedona utilizes our handsome “sunbeam” end frame design.

- Rectangular steel frames bolted to columns
- Many sizes available, in square or rectangle
- Heavy duty columns and frame
- Sunrise gable end design
- Columns placed on the extreme corners to allow more interior space
- Measured outside to outside of frame



C

Community Park, Glendale, AZ: This stylish 20' x 20' model is available in many sizes and is exceptionally heavy duty and vandal resistant.

Russian Jack Park, Anchorage, AK: This 20' x 20' Marine Green structure easily stands up to the Alaskan weather. Like all CRS structures, it features the fewest exposed bolts or screws in the industry, making assembly a breeze and keeping the elements at bay.

SIERRA

The Sierra is a straightforward, utilitarian shed-roof design, which can be bolted directly to a building or may stand alone. Designers looking for smaller shed-roof designs should also refer to Dugouts and the Marana model.

- Heavy duty columns and frame
- Rectangular steel frames bolted to columns or existing building
- Simple design
- Measured eave to eave



A

East Valley Academy, Mesa, AZ: This 10' x 20' three-post model provides welcome shade at this desert high school concession area.



B

Community Center, Cumming, GA: This 20' x 33' model serves as an outdoor meeting place and lunch area for employees. Leaf Green HR-36 steel roof.



USC: Interior view of completed batting practice structure.

SPORTS PAGE

Hit a home run for your sports facility by teaming with Classic Recreation Systems, Inc. to build recreation facilities to your specifications:

- Dugouts in many sizes and column configurations
- Bleacher covers
- Back stop integrated structures
- Ball retrieval systems
- Restroom concession buildings
- Announcers' stands

◀ University of Southern California, Los Angeles, California: 52' x 162' Orlando model batting practice structure with HR-36 steel roof and fiberglass skylights on a 2" x 6" T&G sub-roof.



Sports Park, Palm Coast, FL: This standard 8' x 30' 6-post dugout model features a 24-gauge HR-36 steel roof and Brilliant Blue powder-coated frame.



Mouson Ball Fields, McKinney, Texas: Custom Marana model bleacher covers & foul ball retrieval system.



Chisenhall Sports Complex, Burleson, Texas: 16' x 26', 28', 30' & 32' Marana models with corrugated steel roof & rust powder coated frames.



Thornton Community Sports Complex, Thornton, Colorado: 30' x 76' custom Colorado restrooms model with corrugated roof.



Archgate Softball Complex, Plano, Texas: Combination Colorado model dugouts & bleacher covers with Orlando model backstop structures.

TOWNE LAKE

An ideal centerpiece for any park, the Towne Lake model shares similarities with the Verde (p.54), though the Towne Lake is always hexagonal or octagonal with cupola as a standard feature, and is supplied complete with ornamentation. Available in a variety of sizes.

- Ornamentation included
- Standing seam roof standard
- Hexagonal or Octagonal Shape
- The Towne Lake structures shown on these pages are measured through the center of the structure out to out of the columns. The new way of measuring Towne Lake models is through the center of the structure "point to point" of roof.



A

Sycamore Highlands Park, Riverside, CA: This 20' octagon model graces the summit of a scenic hilltop park. Cool Weathered Copper 12" o.c. standing seam roof. Custom ornamentation reflects the city logo. Simply supply the logo and we'll fabricate it.



B

Towne Lake Park, Irving, TX: This 20' model creates a unique promontory at the structure's namesake park. Colonial Red standing seam roof.

TRELLIS MODELS

Our new Trellis models create a feeling of openness and light where space is more important than shade. All roof members are tubular steel and finished in powder coat frame colors.

- Available in any variety of shapes and sizes
- Creates a functional park sculpture
- Round, rectangular or square steel tubing
- Customized drawings and fabrication to your specifications



A
Kids Park, Lafayette Elementary School, Lafayette, CO: This 16' hexagonal Trellis model, shown in Traffic White, features round columns & grapevine ornamentation.



B
Pacific Pool, Glendale, CA: 12' x 12' Colorado model shown in foreground with Bright Yellow powdercoated, perforated screen roofing. See background Marana/Solar structures on page 64.



C
Arizona State Credit Union, Phoenix, AZ: This 18' x 40' H.D. Trellis compliments the clean massive lines of the adjacent building providing a shaded area for employee breaks.



D
Lemon Park, Fullerton, CA: This rectangular 10' x 84' model creates a division between a parking lot and recreation area. Stone surrounds by others.

VERDE



A

Glendale, AZ: This 20' x 20' model features a Snowdrift White HR-36 steel roof for an elegant appearance.

This contemporary 20' x 20' structure is easy to erect and is made from heavy-duty structural steel tube with corner-mounted columns, allowing additional room for tables under the roof. Available in many sizes in square or rectangle.

- Contemporary design
- Recessed roof
- Rectangular steel columns and frame
- Measured outside to outside of columns



B

Oberg Soccer Field, Eagle River, AK: The heavy-duty 20' x 20' model is ideal for snow loads. Regal White HR-36 roof. Panoramic view provided by the State of Alaska.

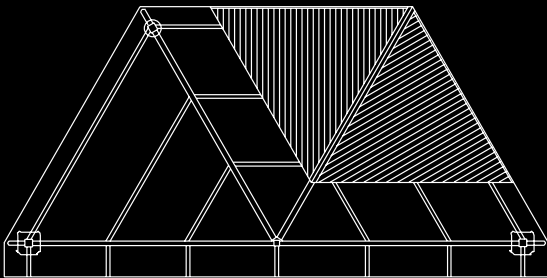
VIENNA

The Vienna model is ideal for outdoor performances in a variety of public settings, or as an overlook or viewpoint. The standard model features tube steel columns and is available in many sizes.

- Available with 2" x 6" tongue & groove subroof
- Three- or four-sided
- Many sizes available
- Measured across face, outside to outside of columns



A Community Park, Castle Rock, CO: This 19'-7" model features a standard HR-36 roof with heavy duty railing. Powder coated frame in Terra Brown.



The Vienna model's three-sided "half-hexagon" design can also be a four-sided "half-octagon" to enclose more space and create a distinctive look.



B Community Park, Austin, TX: This 45' model features R-panel roof with tile mosaic columns by Twyla Arthur.



C Cesar Chavez Elementary School, Richmond, CA: This 49'-4" half-octagon structure covers the center court of the school, giving students the opportunity to enjoy the outdoors in an area with frequent rain. Standard HR-36 steel roof in Regal Blue, with Brown Grey frame powder coat.

DETAILS & ORNAMENTATION

A closer look at our column and beam connections reveal the attention to detail CRS is known for. Note the minimally exposed plates, no exposed bolts and mitered corner extension beams. Details, materials and workmanship set us apart from the competition.



A

Column detail with heavy duty railing attachment



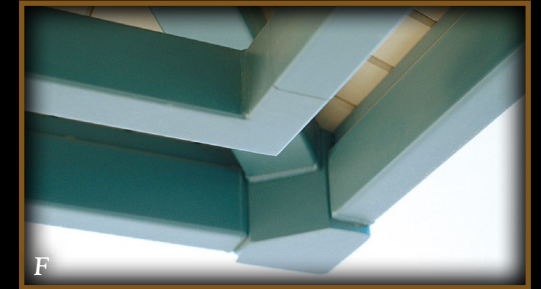
B

Standard column showing anchor bolt cover plate detail with drive pins



E

Denver column connection detail



F

Mingus model with double fascia, giving extra depth to the roof structure



G

Orlando column, shown with standard rafter beam connection, perimeter beam and extension



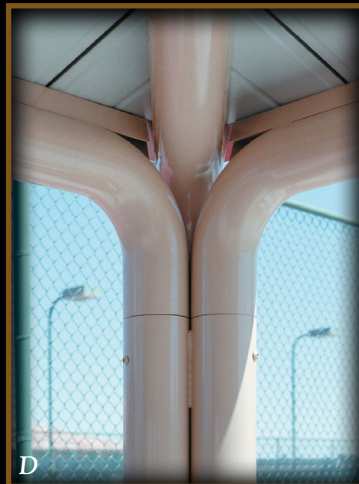
H

Mingus model's corner detailing looks handsome and is easy to install, reducing construction costs



C

Column and end frame for Sedona, Biltmore, and Country Garden models



D

Prescott column and frame detail



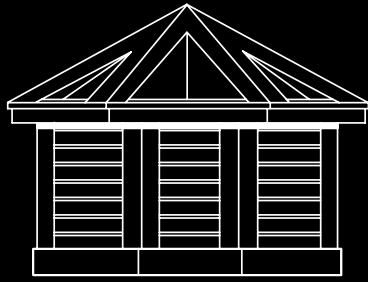
I

Standard Orlando model roof peak compression ring, rafters and extension beam detail

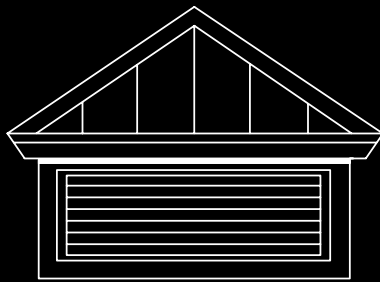


J

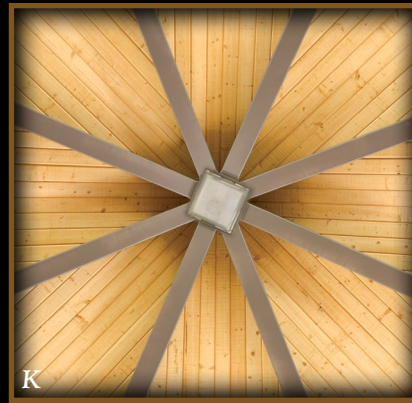
Mesa corner column detail



Hexagon New England-style cupola



Square New England-style cupola



K

Standard tongue & groove and lighting detail.



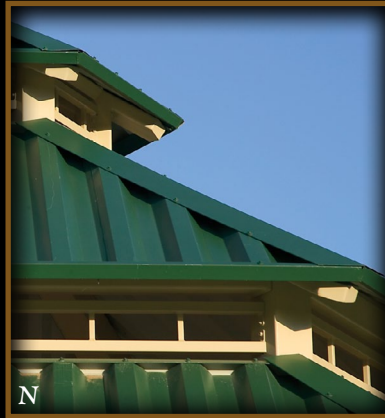
L

Custom cedar 2" x 6" T&G detail on Dallas model with cupola.



M

Optional diamond ornamentation shown on 54' Savannah. Regal Blue HR-36 roof



N

Optional standard picket ornamentation, 5/8" pickets 10" o.c. Shown on Dallas Model w/ Forest Green HR-36 steel roof



O

Optional H.D. picket ornamentation, 1" pickets 5" o.c with concealed wiring for lighting. Cut & mitered main beam



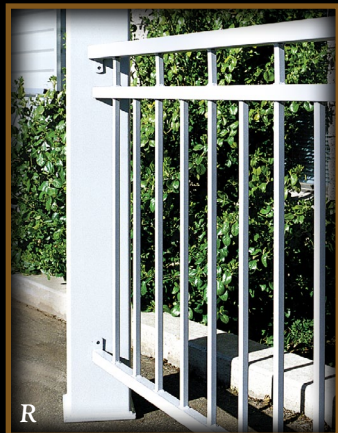
P

Champion inside corner column & lighting detail



Q

Dallas light detail, shown with 2" x 6" tongue & groove subroof



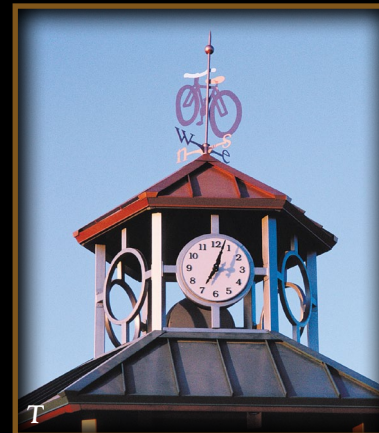
R

Standard railing with primer paint. Has 5/8" square pickets spaced 5" o.c.



S

Heavy duty railing has 1" square pickets spaced 5" o.c. with tube steel rails



T

Custom cupola and clock detail. Clock and weathervane provided by others



U

Functional cupola promotes airflow. Shown with R-panel roof. Cupola part of main frame.

SOLUTIONS



A

Childrens Park at Town Square, Las Vegas, NV: 4 panel "Coolaroo" Sail Cloth.



E

Wooster, OH: 30' x 60' Cheyenne w/ 16" o.c. standing seam steel roof & 9' Uni-solar panels. Built near elementary school to educate students on solar.



B

Sunflower, AZ: A 30' Oregon model provides shade for an interpretive center



F

16' x 16' Custom Mesa model concession cover w/ 12" o.c. standing seam steel roof.



G

Bear Lake, UT: 11' 10" Mesa model fish cleaning station.



C

10' x 10' Wacky Doodle model w/ corrugated roof & multi-color powder coated frame.



D

Meadows Park, Castle Rock, CO: 14' x 10' Northwest model potty cover w/ HR-36 steel roof in Colonial Red.



H

Anthem, AZ: 32' Dallas admissions booth, with variable roof color and pitch.



I

Rolling Oaks Memorial Center, Coppell, TX: 47'-10" x 61'-5" Custom Mesa pavilion w/ cedar T&G sub-roof under standing seam steel roof.



J

Opportunity Village, Las Vegas, NV: 36' Charleston houses carousel ride.

Let the team at CRS go to work on all of your structure needs. The following are just a few of the many applications for which CRS structures can be adapted:

- Parking pay stations
- Bathrooms
- Park entries
- Fish cleaning stations
- Ticket booths
- Maintenance & materials
- Train depots
- Concessions
- Amusement rides
- Educational

ENTRIES, RESTROOMS & OTHER SOLUTIONS



K

Campion Trails, Irving, TX: 10' x 34' Campion park entry.



N

Festival Fields, Avondale, AZ: 40' x 82'-8" Custom restroom & concession w/ block walls by others. (Water harvesting roof)



Q

Longmont, CO: Colorado model with tube steel fascia. Block restroom by others.



L

University of Iowa, Iowa City, IA: A 4' x 18' Cheyenne recalls Iowa's heritage at a modern college football training facility.



O

Knoxville, TN: 22' 6" x 22' 6" custom covers a site-built block restroom. Cool Weathered Copper standing seam roof.



R

Finch Park, McKinney, TX: 32'-6" x 38'-6" T-shaped Campion model w/ Metallic Silver standing seam roof w/ Beige powder coat.



M

Aviary Park, Murphy, TX: 12' entry portal w/ steel ball finials, & laser cut signage. 28' custom Oregon model in background.



P

West Fork, Glenview, IL: 32' x 32' Scottsdale bathroom with cupola and abundant picnic space.



S

Knoxville, TN: Rectangular Campion model is half picnic area, half concession and restroom facility. Galvalume steel roof.



SOLAR ISLAND

The Solar Island Package is comprised of superior quality components manufactured by leading players in the global solar industry. The system includes one each of a solar panel, LED poly carbonate light (equivalent to 80 watts), gel battery, mini breaker, and solid state controller all connected with plug-in wires. Benefits include:

- No utility bills & improved safety!
- No grid interconnection - This saves considerable dollars on trenching costs and utility costs.
- Lifetime of over 50,000 hours & no carbon footprint
- State-of-the-art technology
- Tried and tested solution
- A solar controller gives you the ability to set hours of operation for the lights, and allows the device to operate without an inverter.

◀ Pacific Park Pool, Glendale, CA: 12'-8" x 10'-6" Marana models w/ Crystalline Solar Panel for poolside shade and solar power. The steel frames were designed to be open on top & bottom to support double bi-facial solar panels. These panels convert sunlight to energy from both sides using direct and reflected sunlight.



Installed Vandal Resistant Peel & Stick Solar Panel shown on Ocotillo model.



Crystalline Solar Panel illustrated above.



OPTIONAL
Crystalline Solar Panel
(±21" x 48")



◀ SOLAR COMPONENTS

1. Vandal Resistant/Flexible 68W PV Module, Amorphous, Laminate, Black 64.4 W CEC, 12V (Peel and Stick)
2. Poly carbonate Light Fixture LED 12VDC Bulb (80 Watt Equivalent)
3. 30' Multi Contact SE-2 Cable 10 AWG
4. 2 Battery Pack Solar 12 Volt Sealed, Valve-Regulated, Gelled-Electrotype Battery 31.6 Ah 8GU1H
5. Small Solar Breaker Box Enclosure for 1-4 Mount Breakers
6. Charge/Lighting Controller-10A, 12VDC, SI-10L-12V

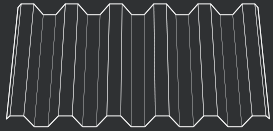
OPTIONS

We have designed a range of system options to suit your needs:

- Crystalline solar panels with attachments, (±21" x 48"). This option takes up less space and is ideal in confined areas.
- 'Peel and Stick' solar panels are 15½" x 9' & 18'. Perfect for curved roofs!
- Additional lights can be added to each structure and the timing of your lighting may be adjusted to accommodate your needs.

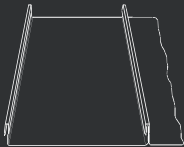
STEEL ROOF SPECIFICATIONS

- 24 gauge standard with 30-year warrantied paint finish on top and white paint on bottom.



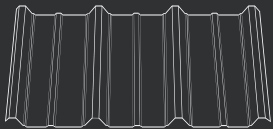
STANDARD HR-36/MEGA RIB

- 3' wide panels w/ 7 3/16" o.c. rib spacing, 1 1/2" profile



OPTIONAL STANDING SEAM

- 12", 16", 17" or 18" o.c. wide panels w/ 1 3/4" high rib, smooth panel (upcharge applies)



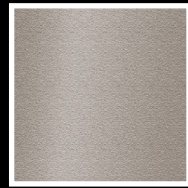
OPTIONAL R-PANEL or SUPER SPAN

- 3' wide panels w/ 12" o.c. rib spacing, 1 1/4" profile



OPTIONAL NU-WAVE CORRUGATED STEEL ROOF

- 37" wide panel w/ 7/8" high ribs spaced 2 2/3" o.c.



**Cool Metallic Champagne



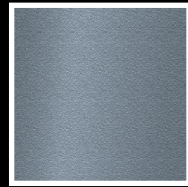
**Cool Copper Penny



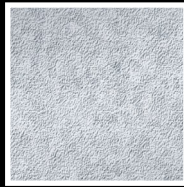
ROOF COLORS

AEP Span and McElroy Metals are our primary roof suppliers. All colors are available from both companies, unless otherwise noted. The color selections marked (*) are only available from McElroy Metals. Those selections marked with (**) will incur an upcharge fee.

WARNING! Roofing paint (top and bottom) can vary slightly from batch to batch.



**Cool ZACtique II



Zincalume/Galvalume



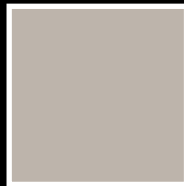
Cool Terra Cotta



Cool Regal Blue



Cool Tahoe Blue



Cool Parchment



Cool Jade Green



Cool Hemlock Green



Cool Red



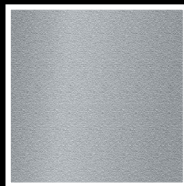
Cool Old Town Gray



Cool Leaf Green



Cool Marine Green



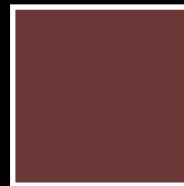
**Cool Metallic Silver



Cool Sierra Tan



Cool Dark Bronze



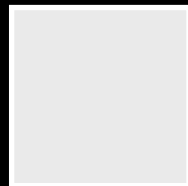
Cool Colonial Red



Cool Zinc Grey



Cool Weathered Copper



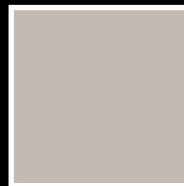
Cool Regal White



Cool Forest Green



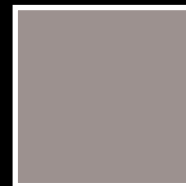
Cool Matte Black



*Sandstone



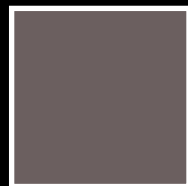
*Patina Green



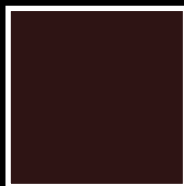
*Ash Gray



**Cool Rustique



*Slate Gray



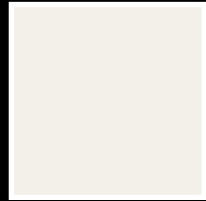
*Mansard Brown



All Printed Color Swatches in this brochure are (approximations) only!
PLEASE CALL FOR ACTUAL COLOR MATERIAL SAMPLES.

FRAME POWDER COAT COLORS

• Many other powder coat colors are available at no additional charge; Those selections marked with (**) are samples of premium paint colors and will incur an upcharge.



Traffic White RAL9016



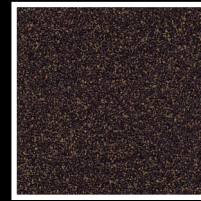
Beige Brown RAL8024



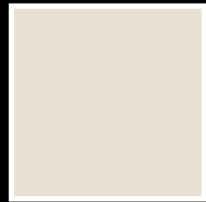
Brilliant Blue RAL5007



Green Blue RAL5001



**Rust



Crème RAL9001



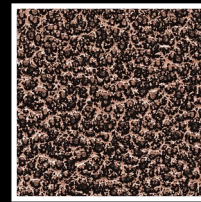
Copper Brown RAL8004



Tomato Red RAL3013



Oxide Red RAL3009



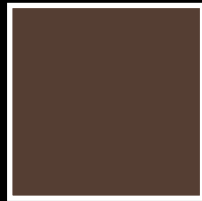
**Antique Copper Vein



Beige RAL1001



Dusty Grey RAL7037



Terra Brown RAL8028



Brown Grey RAL7013



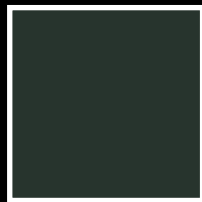
**Silver Vein



Jet Black RAL9005



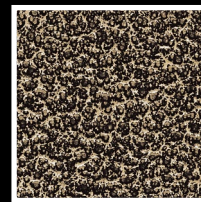
Mint Turquoise RAL6033



Fir Green RAL6009



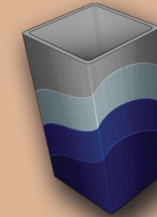
Pine Green RAL6028



**Gold Vein

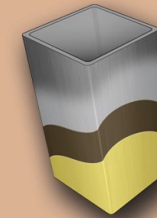
FRAME & COLUMN COATING SPECIFICATIONS

Standard (Prime Paint) Finish



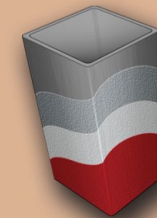
- Shot blasted steel
- Factory applied zinc rich powder coat primer
- Two coats of field applied finish paint supplied by others
- Field paint must be applied within 48 hours of primer application for proper bonding

Powder coating with zinc rich primer and TGIC polyester



- Shot blasted steel
- Factory applied zinc rich primer & TGIC Polyester (5-6 mil min. thickness on exterior and 3 mil min. thickness on interior)

Hot-dip Galvanizing



- Cleaned steel
- Factory applied hot dipped zinc galvanizing
- An option of TGIC polyester powder coat may be applied to galvanizing if desired



All Printed Color Swatches in this brochure are (approximations) only!
PLEASE CALL FOR ACTUAL COLOR MATERIAL SAMPLES.

* Note: An optional Super Durable TGIC and graffiti resistant TGIC color or clear coat is available for an upcharge.

CLASSIC RECREATION SYSTEMS, INC.

11875 E. Berry Drive • Dewey, Arizona 86327
Toll Free (800) 697-2195 • Local (928) 775-3307 • Fax (928) 772-0858
info@classicrecreation.com www.classicrecreation.com



Kern River Upland & River Edge Restoration Project, City of Bakersfield, CA: 15' x 22'-6" Custom "Leaf" design. These unique pipe column, "I" beam and angle iron frame structures feature an HR-36 half solid & half perforated factory cut oval shaped HR-36 steel roof. A total of 6 identical structures were created by Borthwick Guy Bettenhausen, Inc. who is located in Irvine, CA. Each model was detailed & fabricated by Classic Recreation Systems & installed by Elite Landscaping, Inc. of Clovis, CA & were sold by Recreation By Design in Cypress, CA for the City of Bakersfield.

STANDARD FEATURES

- Structural steel columns and frame, minimum .120 (1/8") wall thickness
- Prime painted columns and frame (requires finish paint in the field)
- 24-gauge HR-36 steel roof with 30-year "Kynar" top paint finish
- 24-gauge 3 1/2" x 3 1/2" or "J" channel fascia trim to match roof
- 24-gauge roof trim to match roof
- Hidden connections to the greatest extent in the industry
- No field welding required
- 10-year limited warranty
- Fabricated from \pm 50% recycled materials.
- CAD Design

OPTIONAL FEATURES

- 24, 22, & 20 gauge corrugated roof (upcharge may apply)
- 24, 22, & 20 gauge R-panel steel roof (upcharge may apply)
- 24, 22, & 20 gauge standing seam steel roof (upcharge may apply)
- TGIC powder coat paint with zinc rich primer
- Railings and ornamentation
- 2" x 6" tongue and groove (T & G) sub-roof with roofing options
- Gutters and downspouts
- Provision for electrical outlets and lighting fixtures
- Custom Laser